

LORD High Capacity Laminate (HCL) Elastomeric Bearings

For Off Highway Vehicles

LORD Corporation's High Capacity Laminate (HCL) Elastomeric Bearings not only provide superior vibration control in a variety of agricultural and construction vehicles, but also lower the vehicle's operating costs.

Retrofit Existing Applications

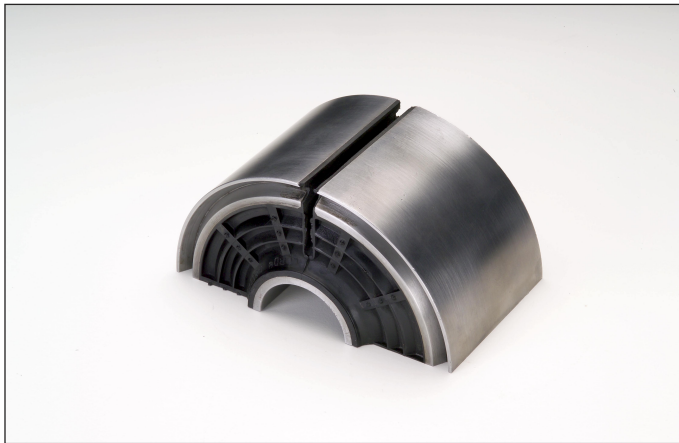
LORD Corporation's HCL Elastomeric Bearings are ideal for replacing conventional bearings, because they require no lubrication, support high radial loads with moderate oscillatory motion and operate in harsh environmental conditions.

Lower Costs

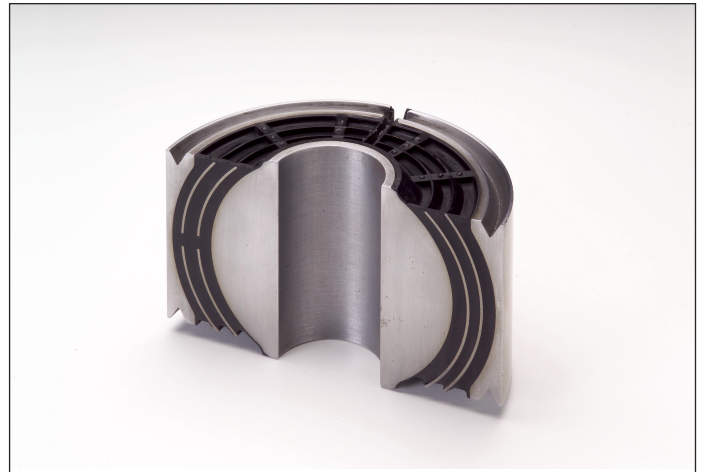
Compared to traditional hard bearings, LORD Elastomeric Bearings have lower maintenance and replacement costs.

Reliable Solution

HCL Elastomeric Bearings are ideal for applications requiring high reliability, close tolerances with metals or tight seals.



LORD HCL Bearing



LORD HCL Bearing

Flexible Design Concept

The flexible design concept of the LORD HCL Elastomeric Bearing allows for cylindrical or spherical sections, or a combination of both, depending on the vehicle inputs.

Features & Benefits

Cost Effective – lowers operating costs; reduces overhaul time; decreases number of parts to stock.

Lower Maintenance Costs – requires no lubrication, ever; extends the joint/bearing life; reduces unscheduled maintenance.

Dependable – reduces vibration levels.

LORD PRODUCT INFORMATION

"Ask Us How" is a trademark of LORD Corporation or one of its subsidiaries.

LORD provides valuable expertise in adhesives and coatings, vibration and motion control, and magnetically responsive technologies. Our people work in collaboration with our customers to help them increase the value of their products. Innovative and responsive in an ever-changing marketplace, we are focused on providing solutions for our customers worldwide . . . Ask Us How.

LORD Corporation
World Headquarters

111 Lord Drive
Cary, NC 27511-7923
USA

Customer Support Center

+1 877 ASK LORD (275 5673)

www.lord.com

